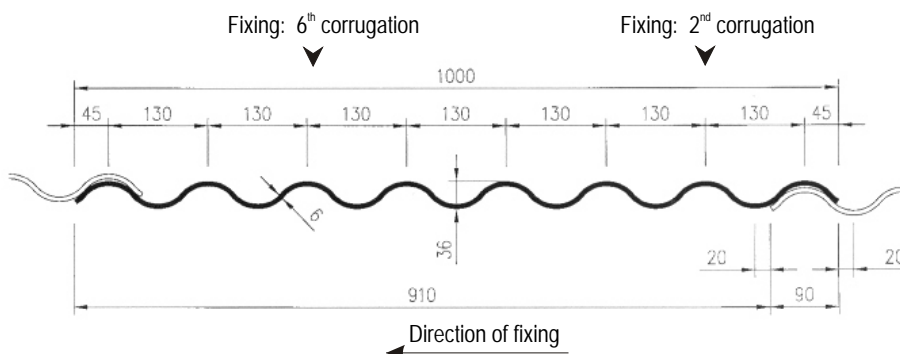
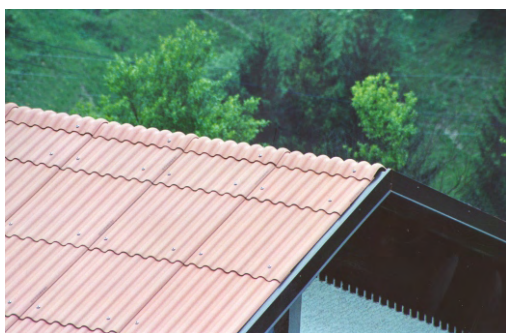


ESAL CORRUGATED SHEETS PROFILE 8

Designation: V8-P



Overall width	1000 mm
Net covering width	910 mm
Pitch of corrugation	130 mm
Height of corrugation	30 mm
Thickness (nominal)	6,0 mm
Side lap	90 mm
Apparent density	min. 1,6 g/cm ³
The surface of the ventilation per unit length of the roof	150 cm ² /m
Moment of resistance	42 cm ³ /m
Breaking load according to EN 494	min. 2500 N/m
Temperature expansion coefficient	10 · 10 ⁻⁶ K ⁻¹
Elasticity module	15500 N/mm ²
Bending moment according to EN 494	min. 55 Nm/m
Classification according to EN 494	B1X

Corrugated sheet 8		Roof pitch 7°	
Sheet length	Sheet mass	Effective cover area (with end lap 200 mm)	Purlin spacing
mm	kg/sheet	m ² /sheet	m
1250	16,8	0,956	1,05

Esal Corrugated sheets 8 of the lengths 1600, 2000 and 2500 mm are available only by special order.

If the roof pitch is 10°, the end lap of the sheet is fastened with the permanently lasting plastic mastic that is 7mm thick.

In the table above, the data are given about purlins spacing for the product Esal Corrugated sheets 8, 1250 mm long, when roofing in normal conditions. If Esal Corrugated sheets 8 is used to roof high, open or high-raised buildings, purlins spacing must be usually set by static calculation.

When supplying fastening material, only two self drilling fasteners per sheet are needed when the sheet is 1250 mm long; whereas for the sheets longer than 2000 mm (2000 mm inclusive) three self drilling fasteners per sheet are needed. For high, high-raised or open buildings, as well as in exposed areas, higher number of fasteners is needed.

Esal corrugated sheets are guaranteed for a 10 years' period provided all recommendations of Esal, as in force at the moment of assembly, with regard to planning, construction, storing and installation are fully respected and provided that exclusively Esal's specially designed fastening-accessories are used.

Information: ESAL d.o.o., Vojkova 9, SI-5210 Deskle, Slovenia, tel. +386 5 3921 610, e-mail: esal@esal.si, <http://www.esal.si>